



HERO

INNOVATIVE *COLOR* TECHNOLOGY

- S2200 • S2300 • S2400VT • S2450 • S2451 • S2700 • S2850M
- Shakers and Mixers



S2450



S2700

ONE GALLON Multi Mix™

S2450 (Countertop) S2451 (Floor stand)

The S2450 is a time tested and performance proven one gallon Dual Axis™ vortex paint mixer. This unit features HERO's rugged gear driven design tested to 100,000+ mix cycles.

Features

- Dual Axis™ vortex mixing action - can spins while it rotates on two axis
- Nylatron™ gear drive
- Lid Locks - unique lid lock holds can lid down while mixing
- Gallon can holder - holds round plastic or metal cans, also available with square/round can holder
- Door Sensor - mixer will not operate until door is closed
- Rotating door - for "zero" vertical clearance
- Three point heavy duty shock absorbing frame mounts for quiet, safe and vibration free operation
- Simple, rugged, mechanical timer. Also available with digital push-button timer
- S2451 has a removable floor stand for counter/shelf operation
- Silicone conformal coated control board for protection against moisture and humidity
- Unique spill containment system
- 1 quart can adapter included
- All steel construction, epoxy powder coated main enclosure
- Heavy duty ball bearing motor, 1/3 hp. 115 Volt / 60 hz
- 2 year parts and labor warranty

Can lid locks



Quart Adapter HL350A18



S2450
Countertop

S2451
Floorstand



BL350-A8D
Dual stand

Optional
3-button electronic timer



Optional cycle counter



Optional
Square/round can holder



Spill
containment
system tray



BL350-A8Q
Quad stand

• ADVANTAGES

Paint Spill Containment System

The unrivaled paint containment system channels spills to the tray located at the bottom of the mixer. Not only does this system contain the spill, it eliminates floor clean up.

Options

- 3-button electronic timer
(30 sec, 2 minute, 3 minute)
- Mix cycle counter
- Square/round can holder

Specifications

S2450 (Countertop)

Dimension 25"H x 18"W x 24.5"D

Shipping 115 lbs 31"H x 21"W x 28"D

S2451 (Floorstand)

Dimension 36"H x 18"W x 24"D

Shipping 138 lbs 41" h x 21"W x 28" D

2 units on Dual stand

Dimension 54"H x 21"W x 36"D

Shipping 75 lbs 38"H x 21"W x 36"D

4 units on Quad stand

Dimension 54"H x 42"W x 36"D

Shipping 155 lbs 38"H x 42"W x 36"D

One Gallon Vertical Twin™

- Model S2400VT



Features

- The Dual Axis™ Vertical Twin paint mixer enables you to mix two gallons at a time with vortex mixing action. Mix any combination of gallons or quarts with the convenient included adapter.
- Dual Axis™ action spins while it rotates - Non-perpendicular axes of rotation which provide for safe, fast, and quiet mixing
- Dual Paint Spill Containment System - Paint spill tray located at the bottom of each mixer eliminating floor clean up
- Door Sensor - shaker will not operate until door is closed
- Rotating Door - for “zero” vertical clearance
- Quiet, safe, fast and vibration free
- Simple rugged 5 minute timer, or optional 3 setting digital timer
- Lid Locks - Loading and locking a can in place is effortless because of the unique easy-lock design
- Warranty - 1 year labor 2 year parts

SPECIFICATIONS

S2400VT

• Dimension	53.5" H x 18"W x 33" D
• Shipping	274 Lbs 58" H x 21"W x 36" D
• Motor	Heavy duty ball bearing motor, 1/3 hp. 115 Volt / 60Hz



●
●
● **Dual Head Paint Shaker**
Model S2200

Features

- Built-in 5-minute timer with on/off switch
- Easy clamping system fits paint or aerosol cans up to 1 gallon (4 litres)
- Countertop style unit
- Durable, fast, quiet, and compact design
- Easy to use
- Warranty 1 year labor 2 year parts

- **FASTER SHAKE TIME**
- **QUIETER OPERATION**



SURE SEAL™
Can Lid Closer
Model HL498

Can lid closer for pints, quarts, and gallons. Fast, no-mess quiet operation.



BUCKET BUSTER®
5 gallon pail opener
Model BB-010-10

The fastest and easiest way to open most buckets or pails. Its rugged metal construction and unique high-leverage design provide trouble free pail opening. (Available in cases of 10)

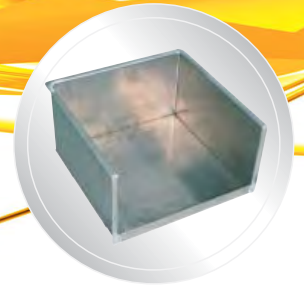
SPECIFICATIONS	S2200
● Dimension	26" H x 28" W x 19" D
● Shipping	169 Lbs 32" H x 21" W x 25.5" D
● Motor	1/3 hp, 115 Volt / 60 Hz or 230 Volt / 50 Hz



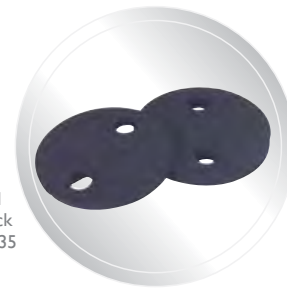
7 position Quart Can Tray



Easy Maintenance - Removable side and back panels provide easy access for periodic maintenance.



Optional square can adapter holds 4 square cans



Can Pad
3/4" thick
HL473235

Can Pad
1/2" thick
HL473234

● ● ●
● **5 Gallon - Mega Mix™**
High Speed Multi Can Automatic Paint Shaker
Model S2700

Features

- Heavy duty mixing capacity - up to 110 lb. (50 kg) accommodates all can shapes and sizes from half pint to 5 gallon cans, will also accept 1 gallon cases
- Electronics - state of the art innovative linear drive pressure plate design. Electronic pressure sensing with CPU based control board
- Simple to operate control panel - Two push buttons and a timer control the machine
- Emergency Stop - Cuts power to motor immediately
- Automatic - Simply push the start button and the S2700 will clamp, run, release, reset, and open the door
- Clear door for visual inspection
- Door Sensor - Mixer will not operate until door is closed. Door cannot be opened during operation
- Easy to load - Slide payload from shelf on to stainless steel tray
- Equipped with wheels for easy installation
- Quiet - Sound panels absorb noise
- Quick mixing - Reciprocating elliptical motion blends paint thoroughly
- Heavy Duty Motor - Rugged, reliable, totally enclosed and fan cooled
- Maximum load dimension: 16"H x 15"W x 14.5"D
- Unit includes: 7 position quart can tray and 2 can pads
- Warranty - 1 year labor 2 years parts

SPECIFICATIONS

S2700

●	Dimension	61" H x 27" W x 24" D
●	Shipping	630 Lbs 68" H x 32" W x 32" D
●	Motor	3/4 hp 115 volt / 60 Hz or 230 volt / 50 Hz

Locking Mechanism



Control Panel



● ● ● **FUSION GYRO™**
Manual Camp
Gyroscopic Mixer
Model S2850M

The S2850M FUSION GYRO is the latest addition to HERO's paint mixer family. The FUSION is specifically designed for use with hard to mix highly viscous paints. It can handle round or square individual cans from 1 pint to 5 gallons.

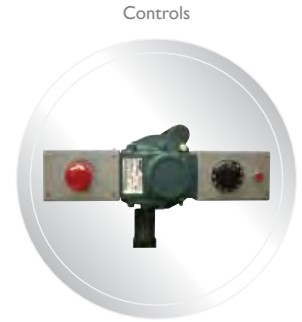
Features

- Front roller makes the unit easy to load. Slotted rubber bottom plate for easy can centering and solid container support. Optional roller line configuration available with metal bottom plate and flat front panel.
- Suitable for mixing non-explosive paints in metal or plastic containers of different sizes and shapes from 2 3/4" to 16" in height and up to 13" in diameter. (Max can height with optional built in bail handle support 7 1/2".)
- Door safety lock - unit will not mix with door open. Door cannot be opened while operating.
- Easy to use and maintain, user friendly and simple controls
- Built in cycle counter located on internal board.
- Reinforced sliding front door for easy access and can loading
- 6-minute mechanical timer or advance digital timer and display
- Lock holds carriage in vertical position for easy can loading
- Equipped with 3 wheels and 4 leveling feet for easy positioning and installation
- Unique paint containment system to catch spills
- Can load height designed to work with standard height roller lines (19.75" to 20.75")
- Emergency stop - cuts power to motor immediately

SPECIFICATIONS

S2850M

● Dimension	47.5" H x 36" W x 31.5" D
● Shipping	550 Lbs 56" H x 41" W x 38" D
● Motor	1 hp 115 / 230 volt / 60 Hz or 230 volt / 50 Hz



Controls



Mix paddle HL350-120B

-
-
- **TRIMIX™ Coatings Blender**
3 Position with roller line
Model S2300

Features

- Specially designed for mixing thick products like stucco or industrial coatings
- 5 to 1 transmission ratio to handle the toughest jobs
- Each 3/4hp motor is controlled by a can-in-place micro-switch that only spins paddles that have a bucket in place.
- One timer and emergency switch operates all 3 motors.
- Unit sold complete with heavy duty 10 Ft long roller conveyer, quick release chucks, and three Boomerang mixing paddles
- Bucket slide locking mechanism
- Easy to use counter balanced positioning arm
- Warranty 1 year labor 2 year parts

SPECIFICATIONS	S2300	S2300 Roller-Line Conveyor
● Dimension	73" H x 39" W x 37" D	23" H x 24" W x 121" D
● Shipping	757 Lbs 79" H x 42" W x 43" D	250 Lbs 13" H x 22" W x 60"
● Motor	Three 3/4 Hp heavy duty ball bearing motors, 230 volt / 60 Hz, 16 Amp, 345 Rpm	



● HEAD OFFICE: **HERO PRODUCTS GROUP** I.C.T.C. HOLDINGS CORPORATION
 ● 720 Eaton Way, Delta, B.C., Canada V3M 6J9
 ● TOLL FREE (800) 494-4376 (US & Cdn) • TOLL FREE FAX (866) 778-3323 (US & Cdn)
 ● TEL: (604) 522-6543 • FAX: (604) 522-8735
 ● sales@hero.ca • www.hero.ca