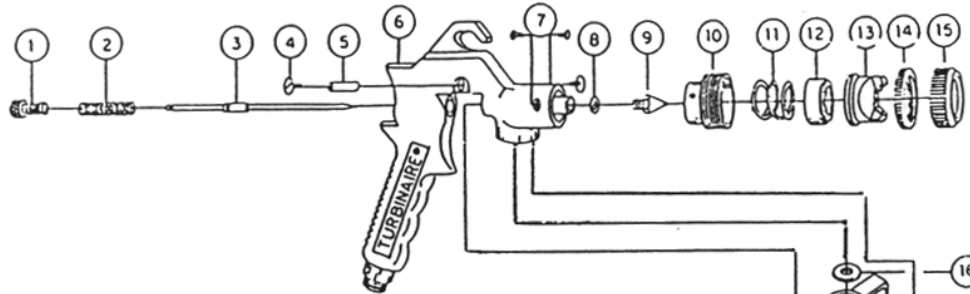
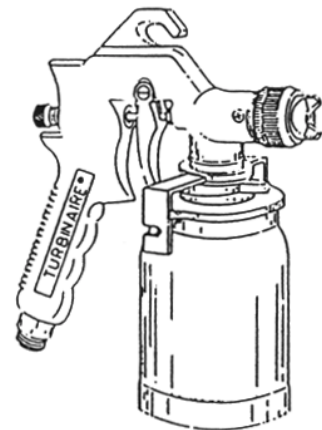
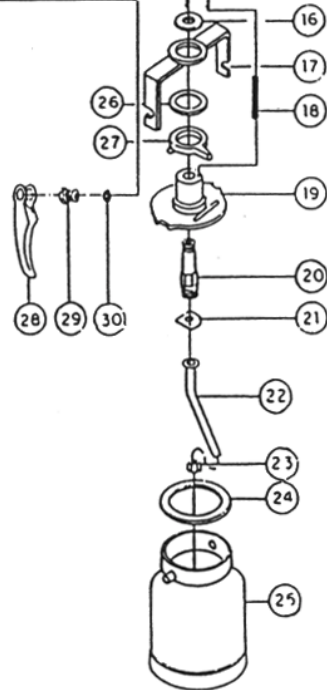


TURBINAIRE 11CS GUN QUICK REFERENCE

MODEL 11 CS GUN (FOR MODEL 1537 VS)



REF#	PART #	DESCRIPTION	QTY
1	10-37-112	MATERIAL FLOW ADJUST. SCREW	1
2	10-37-111	SPRING	1
3	10-37-232S	NEEDLE 1.0 mm	1
	10-37-234S	1.5 mm	
	10-37-236S	2.0 mm	
	10-37-237S	2.5 mm **	
	10-37-238S	3.0 mm **	
4	10-37-107	TRIGGER RETAINING SCREW	2
5	10-37-108	TRIGGER PIVOT	1
6	10-37-170	GUN BODY	1
7	10-37-176	SCREW	2
8	10-37-106	FIBRE WASHER	1
9	10-37-222S	FLUID TIP 1.0 mm	1
	10-37-224S	1.5 mm	
	10-37-226S	2.0 mm	
	10-37-227S	2.5 mm **	
	10-37-228S	3.0 mm **	
10	10-37-203	DISTRIBUTOR HOUSING	1
11	10-37-183	SPRING	1
12	10-37-204	AIR DISTRIBUTOR	1
13	10-37-102	AIR CAP	1
	10-37-1023	AIR CAP ** (2.5 & 3.0 mm ONLY)	
14	10-37-200	LOCK RING	1
15	10-37-201	SLEEVE NUT	1
16	10-37-116	CUP TOP WASHER	1
17	10-37-156	Q.R. CUP TOP YOKE	1
18	10-37-113	AIR PRESSURE FEED TUBE	1
19	10-37-158	Q.R. CUP TOP	1
20	10-37-122	SIPHON TUBE EXTENSION	1
21	10-37-121	SPLASH GUARD	1
22,23	10-37-1189	SIPHON TUBE WITH LOCKING NUT	1
24	10-37-159	Q.R. CUP TOP GASKET	1
25	10-37-160	Q.R. PAINT CUP	1
26	10-37-155	Q.R. CUP TOP ALUMINUM SPACER	1
27	10-37-157	Q.R. CUP TOP CAM LEVER	1
28	10-37-109	TRIGGER	1
29	10-37-115	GLAND NUT	1
30	10-37-114	GLAND SEAL	1



** The use of 2.5 mm or larger fluid tips / needles requires the use of special air cap.